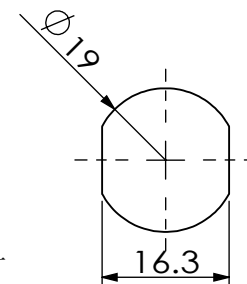
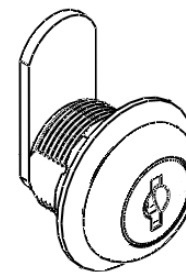
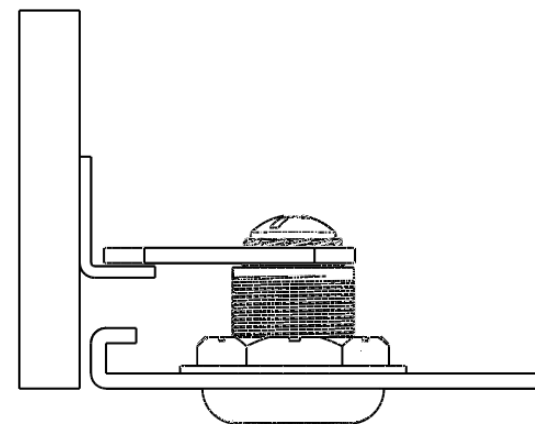


注：2790不选配A1101  
Notes: 2790 W/O A1101

安装示意图 Installation diagram

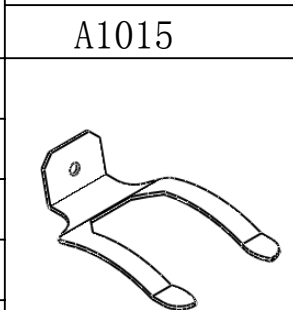


参考开孔尺寸  
Refers to the hole size

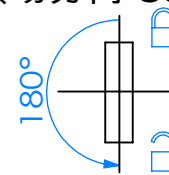
规格参数表  
Specification

可选配件 Selected accessories

Model	D	L
2790	19	16
2791	19	20
2792	19	25
2793	19	30



转动方向 Core turn direction



279

Version  
A0

WUIKAI LOCKS Manufactory Ltd.